

IV

Organization

- 17 I. Organizational Structure
- 20 II. Information about Board of Directors,
Supervisors, President, Vice Presidents, Department
Heads and Managers of Various Branches





I. Organizational Structure

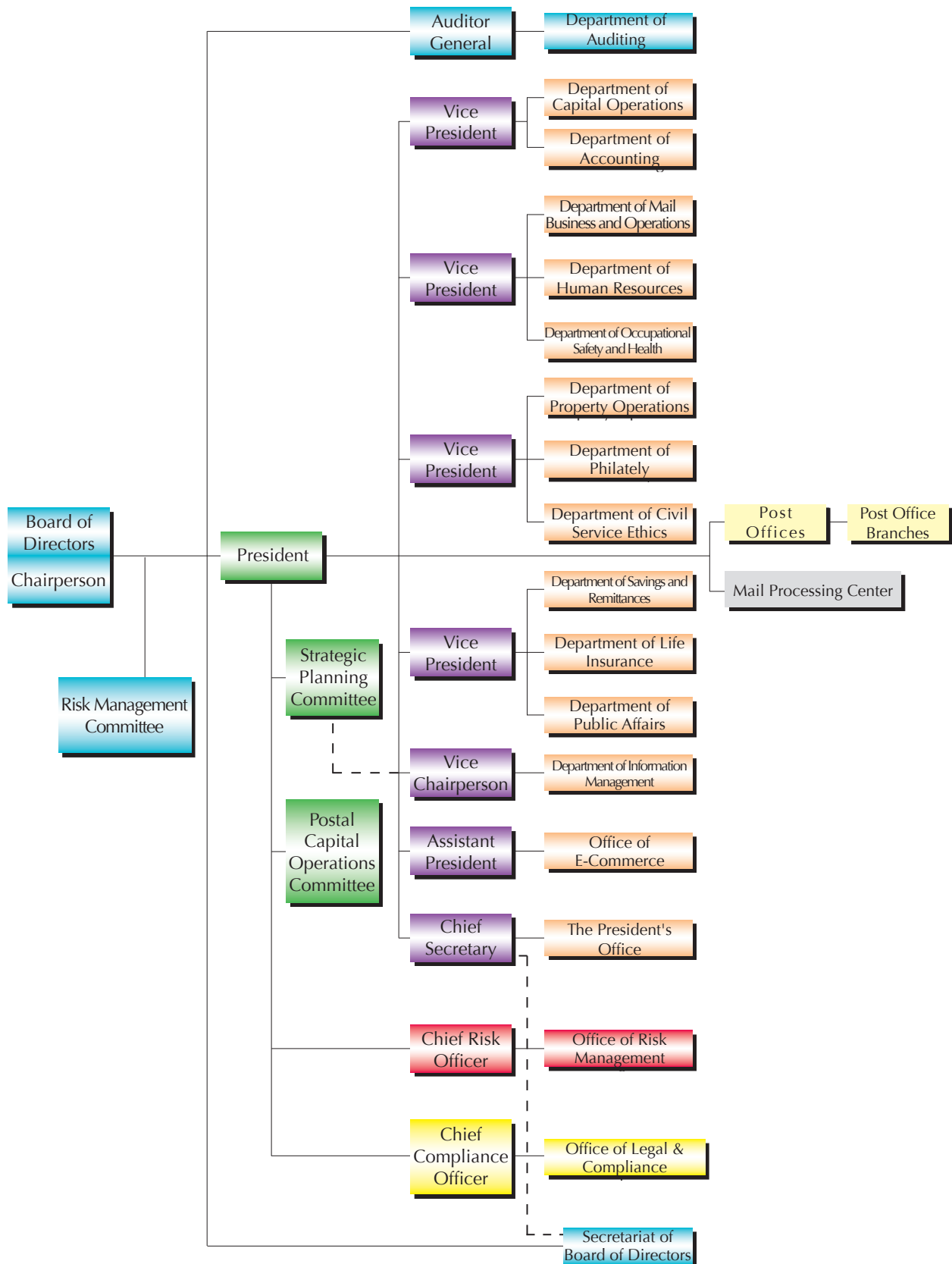
(I) Structure

The Company is under the command of the Ministry of Transportation and Communications and has an organizational structure as follows:

1. The board of directors comprises eleven to fifteen members. In accordance with the laws and the Company's Articles of Incorporation, the board has the authority to make decisions for the Company's operations while the Secretariat of Board of Directors is in charge of all related administrative affairs.
2. Three supervisors are elected pursuant to the laws and the Company's Articles of Incorporation to oversee the financial and business operations.
3. In conformity with the laws, the Company's Articles of Incorporation, as well as decisions made by the board of directors, the president is appointed to oversee the Company's operations and supervise all staff and departments. Four vice presidents, one assistant president, and one chief secretary are assigned to assist the president. The President's Office is set up with the chief secretary as head. Multiple sections may further set up to meet the business needs.
4. The chief risk officer is responsible for overseeing risk management. The Office of Risk Management is set up with the director. Multiple sections may further set up to meet the business needs.
5. The chief compliance officer is responsible for overseeing the compliance to the laws and other legal matters. The Office of Legal Compliance is set up with the director. Multiple sections may further set up to meet the business needs.
6. The auditor general is appointed by the board of directors. The Department of Auditing (right under the command of the board) is responsible for conducting the Company's audits and reporting to the board as well as supervisors on a regular basis.
7. The Strategic Planning Committee has one chairperson, a position that can be held concurrently by the president. The committee also consists of five vice chairpersons (one of whom works on a full-time basis) and several committee members.
8. The Company also sets up the Department of Mail Business and Operations, the Department of Philately, the Department of Savings and Remittances, the Department of Life Insurance, the Department of Property Operations, the Department of Capital Operations, the Department of Human Resources, the Department of Civil Service Ethics, the Department of Accounting, the Department of Information Management, the Department of Occupational Safety and Health, the Department of Public Affairs, and Office of Electronic Commerce.
9. Twenty Responsibility Center Office are designated to serve as administrative and supervisory bodies, each forming an operational team with their subordinating branch offices to meet the business needs.
10. To meet the demands for mail business operations, the company established Taipei Mail Processing Center to coordinate mail processing operations, mail delivery network, as well as mail routes. In addition, the mail processing center utilizes a high-performance automatic system to process the mail.

IV Organization

(II) Organization Chart



(III) Structural Division and Its Adjustments

The current organizational structure is divided into administrative branch and business branch. The business branch is further sub-divided into self-management branch and agential service branch. As of the end of 2016, the total number of the offices reached 2,390. The administrative ran 21 offices, including the head office and 20 post offices (or Responsibility Center Offices). The business branch ran 2,369 offices, out of which 1,312 belonged to self-management sub-branches, including 1 mail processing center and 1,311 post office branches. The other 1,057 offices fell into the agential service sub-branches, including 586 post agencies and 471 stamp-sales agencies. There was a decrease of 73 offices (2.96%) in total, as compared to 2015.

Branches of Postal Services

Unit: Office

Types		2015	2016	Growth %	
Administrative Branch	Headquarters	1	1	0%	
	Postal Offices	20	20	0%	
	Total	21	21	0%	
Business Branch	Self-Management	Mail Processing Centers	3	1	-66.7%
		Post Office Branches	1,324	1,311	-0.98%
		Temporary Post Offices	0	0	0%
		Total	1,327	1,312	-1.13%
	Agencies	Post Agencies	613	586	-4.40%
		Stamp-Sales	502	471	-6.18%
		Total	1,115	1,057	-5.20%
	Total		2,463	2,390	-2.96%



Management Team (from left to right)

Susan Lan, Chief Secretary, S. T. Chen, Vice Chairperson, S. M. Wang, Vice President, J. T. Chiang, Vice President, S. J. Chen, President, Philip W. Ong, Chairperson, Y. J. Wu, Vice President, Jui-Chi Chou, Vice President, K. C. Yang, Auditor General, Y. K. Pan, Assistant President, K. H. Li, Assistant President

II. Information about Board of Directors, Supervisors, President, Vice Presidents, Department Heads and Managers of Various Branches

(I) Information about Directors and Supervisors

June 15, 2017

Title	Name	Education	Major Experience(s)	Date Elected
Director	Philip W. Ong	Master in Investment and Financial Risk Management, City University of London	Delegation, Taipei Economic and Cultural Center in India; Director, FSC Representative Office in New York	May 11, 2015
Director	S. J. Chen	Department of Chinese Literature, National Chung Hsing University	Vice President and Chief Secretary of Chunghwa Post Co., Ltd.	May 11, 2015
Director	Y. J. Wu	Master in Business Administration, Tatung Institute of Technology	Director and Vice Director, Department of Capital Operations, Chunghwa Post Co., Ltd.	Jan 16, 2016
Director	W. H. Chen	Ph. D in Management Science, State University of New York at Buffalo	Dean, College of Management, NTNU	May 11, 2015
Director	H. C. Lai	Ph. D in Management Information Science, Purdue University	Academic Deputy Dean, College of Management, National Sun Yat-sen University	May 11, 2015
Director	Y. S. Liu	Ph. D in Business Administration, National Sun Yat-sen University	Chair, Department of Business Administration, Tunghai University	May 11, 2015
Director	F. G. Chan	Institute of Economics, National Chengchi University	Special Commissioner, Deputy Director General, and Director General of Council for Economic Planning and Development	May 11, 2015
Director	M. R. Chen	Master in Law, Fu Jen Catholic University	Counselor and Chief Secretary, Mongolian & Tibetan Affairs Commission	Feb 14, 2017
Director	Y. H. Cheng	Department of Statistics, National Chengchi University	Section Chief, Department of Economic Research, Central Bank of the Republic of China (Taiwan)	May 11, 2015
Director	R. W. Liu	PH. D. in International Business, National Taiwan University	Director, Statistics Office, Control Yuan; Special Commissioner, Senior Executive Officer, Section Manager, Directorate-General of Budget, Accounting, and Statistics, Executive Yuan, R.O.C.(Taiwan)	Nov 27, 2015
Director	K. C. Tseng	Institute of Forestry, National Chung Hsing University	Director General, Bureau of Promotion of Private Participation, Ministry of Finance; Counselor, Public Construction Commission, Executive Yuan; Director, Administrative Office of Sun Moon Lake National Area, Tourism Bureau, MOTC	June 22, 2016
Director	S. C. Su	Master in Institute of the American Studies, Tamkang University	Special Commissioner, Department of Customs Administration, Ministry of Finance; Senior Auditor of Customs Administration, Ministry of Finance	May 11, 2015
Director	C. C. Lin	Department of International Trade, Open Business College Affiliated with National Taipei College of Business	Vice Chairman, Chinese Postal Workers' Union (CPWU) for the 2 nd Term, CPWU Taipei Branch for the 1 st and 2 nd Term; Supervisor, Corporate Body of Taiwan Postal Association for the 3 rd Term	May 11, 2015
Director	W. F. Wu	Department of Business Administration, Tatung College of Business	Director and Vice Chairman, CPWU; Chairman, Headquarters Branch, CPWU	May 11, 2015
Director	C. S. Chen	Tung Hai Vocational High School of Commerce	Chairman, Sanchung Branch, CPWU; Vice Chairman, CPWU	May 11, 2015
Supervisor	C. C. Wu	Department of Land Economics, National Chengchi University	Counselor, Executive Yuan	May 11, 2015
Supervisor	M. R. Luo	Master for Eminent Public Administrators, Module for Financial Policies, National Cheng Chi University	Chief Accountant, Food and Drug Administration, Ministry of Health and Welfare; Chief Accountant, Banking Bureau of Financial Supervisory Commission	June 8, 2017
Supervisor	M. Chen	Master in Applied Statistics, Fu Jen Catholic University	Director, Department of Statistics, Ministry of Health and Welfare	Feb 23, 2017

Note: Said officers are all nationals of R.O.C.



(II) Information about President, Vice Presidents, Department Heads, and Managers of Various Branches

June 20, 2017

Title	Name	Education	Major Experience(s)	Date Elected
President	S. J. Chen	Department of Chinese Literature, National Chung Hsing University	Vice President, Chunghwa Post Co., Ltd. (CHP)	May 11, 2015
Vice President	Y. J. Wu	Master in Business Administration, Tatung Institute of Technology	Director, Department of Capital Operations, CHP	June 27, 2012
Vice President	J. T. Chiang	Department of Law, National Taiwan University	Chief Secretary, CHP	July 16, 2014
Vice President	Jui-Chi Chou	Department of Journalism, Chinese Culture University	Vice Chairman, Strategic Planning Committee, CHP	May 29, 2015
Vice President	S. M. Wang	Master in Computer Science, Asian Institute of Technology, Thailand	Chief Secretary, CHP	Jan 15, 2016
Committee Member and Acting Assistant President, Strategic Planning Committee ; Acting Director, Preparatory Office of the General Management Office of the Postal Service Logistics Park	K. H. Li	Department Chemical Engineering, Tamkang University	Manager, Taipei Post Office	Nov 23, 2016
Vice Chairperson, Strategic Planning Committee	S. T. Chen	Department of Library and Information Science, Fu Jen Catholic University	Vice President, CHP; Acting Director, Preparatory Office of the General Management Office of the Postal Service Logistics Park	Nov 23, 2016
Auditor General	K. C. Yang	Department of Political Science, Tunghai University	Chief Secretary, CHP	Jan 16, 2015
Chief Secretary	Y. K. Pan	Master in Finance, National Taiwan University	Director, Department of Capital Operations, CHP	Jan 15, 2016
Committee Member and Acting Chief Secretary, Strategic Planning Committee	Susan Lan	Department of Political Science, National Taiwan University	Manager, Panchiao Post Office	Nov 23, 2016
Director, Department of Mail Business	M. C. Hsueh	Master in Management, Ming Chuan University	Assistant Manager, Taipei Post Office	Jan 16, 2016
Director, Department of Philately	L. L. Chien	Master in International Business, Tamkang University	Manager, Keelung Post Office	July 16, 2014

IV Organization

Title	Name	Education	Major Experience(s)	Date Elected
Director, Department of Savings and remittances	H. C. Huang	Department of Public Finance, National Chung Hsing University	Assistant Manager, Panchiao Post Office	Jan 16, 2015
Director, Department of Life Insurance	H. E. Chiu	Master in Public Administration Dominican University of California	Committee Member, Strategic Planning Committee, CHP	Nov 9, 2015
Director, Department of Property Operations	W. C. Tsai	Master in Mechanical Engineering, National Taiwan University	Supervising Engineer, Department of Property Operations, CHP	Jan 16, 2014
Director, Department of Capital Operations	C. C. Huang	Executive Master in Business Administration, National Chengchi University	Deputy Director, Department of Capital Operations, CHP	Jan 15, 2016
Committee Member, Strategic Planning Committee; Acting Director, Department of Human Resources	S. C. Yang	Department of Business Administration, National Taiwan University	Director, Department of Occupational Safety and Health, CHP	Nov 23, 2016
Director, Department of Civil Service Ethics	C. M. Chen	Department of Accounting, Feng Chia University	Deputy Director, Office of Civil Service Ethics, CHP	Jan 16, 2016
Director, Department of Accounting	C. R. Wang	Department of Business, Providence University	Deputy Director, Department of Accounting, CHP	July 16, 2014
Director, Department of Information Management	Y. K. Hsiao	Department of Political Science, National Taiwan University	Deputy Director, Department of Information Management, CHP	Jan 16, 2016
Director, Department of Occupational Safety and Health	C. H. Ku	Department of International Trade, Open Business College Affiliated with National Taipei College of Business	Manager, Taoyuan Post Office	Nov 23, 2016
Chief Risk Management Officer	P. H. Huang	Department of Accounting, National Chung Hsing University	Lead Auditor, Department of Auditing, CHP	July 6, 2015
Chief Compliance Officer	C. Y. Chiang	Department of Sociology, National Open University	Director, Department of Occupational Safety and Health, CHP	Jan 16, 2015
Acting Manager, Taipei Post Office	Y. K. Pan	Master of Finance, National Taiwan University	Chief Secretary, CHP	Nov 23, 2016



Title	Name	Education	Major Experience(s)	Date Elected
Manager, Panchiao Post Office	C. Y. Kuo	Master in Law, Soochow University	Committee Member, Strategic Planning Committee, CHP; Assistant Manager, Taipei Post Office	Nov 23, 2016
Manager, Taoyuan Post Office	C. H. Chiu	Department of Law, National Chengchi University	Director, Department of Human Resources, CHP	Nov 23, 2016
Manager, Taichung Post Office	C. C. He	Department of Public Administration, National Open University	Assistant Manager, Taichung Post Office	Jan 16, 2014
Manager, Kaohsiung Post Office	T. C. Kuo	Master in Risk Management and Insurance, National Kaohsiung First University of Science and Technology	Assistant Manager, Kaohsiung Post Office	Jan 7, 2016
Manager, Keelung Post Office	L. C. Chang	Department of Law, National Chung Hsing University	Deputy Director, Department of Occupational Safety and Health, CHP	Nov 23, 2016
Manager, Sanchung Post Office	C. A. Liao	Master in Accounting, National Chengchi University	Manager, Hsinchu Post Office	July 15, 2015
Manager, Hsinchu Post Office	C. H. Hsu	Master in Public Administration, National Chung Hsing University	Manager, Keelung Post Office	Nov 23, 2016
Manager, Changhua Post Office	Y. H. Wang	Department of Business Administration, Tunghai University	Manager, Chiayi Post Office	Jan 9, 2015
Manager, Chiayi Post Office	T. P. Shih	Master of Science Program in Accounting and Information, National Chung Cheng University	Manager, Yunlin Post Office	Sep 19, 2016
Manager, Tainan Post Office	C. H. Su	Master in Business Administration, National Sun Yat-sen University	Manager, Chiayi Post Office	Sep 19, 2016
Manager, Yilan Post Office	S. C. Chiu	Department of Education, National Chengchi University	Assistant Manager, Keelung Post Office	Jan. 16, 2016
Manager, Miaoli Post Office	Y. H. Yeh	Executive Master of Business Administration, Yuan Ze University	Manager, 901 Branch, Taipei Post Office	Mar. 4, 2016

IV Organization

Title	Name	Education	Major Experience(s)	Date Elected
Manager, Nantou Post Office	M. S. Li	Department of Law, Fu Jen Catholic University	Section Chief, Marketing Section, Taichung Post Office	July 16, 2016
Manager, Yunlin Post Office	C. L. Wu	Department of Administration, Junior College of National Open University	Section Chief, Business Development Section, Department of Mail Business and Operations, CHP	Sep 19, 2016
Manager, Hsinying Post Office	H. L. Wu	Master in Business Administration, Dayeh University	Manager, Pingtung Post Office	Jan 8, 2016
Manager, Pingtung Post Office	S. C. Yu	Executive Master of Business Administration, National Sun Yat-sen University	Section Chief, Planning and Marketing Section of Kaohsiung Post Office	Jan 8, 2016
Manager, Hualien Post Office	R. K. Yu	Department of Business Administration, Open Business College Affiliated with National Taipei College of Business	Auditor, Department of Auditing at Taoyuan, CHP	Mar 2, 2016
Manager, Taitung Post Office	T. H. Li	Department of Transportation, National Chiao Tung University	Section Chief, General Affair Section of Kaohsiung Post Office, CHP	Jan 18, 2016
Manager, Penghu Post Office	L. M. Chen	Department of Administration, Open Business College Affiliated with National Chengchi University	Section Chief, Operation Section of Kaohsiung Mail Processing Center, CHP	Jan 16, 2016
Director, Taipei Mail Processing Center	M. H. Hsu	Department of Public Relation, Shih Hsin College of Journalism and Communication	Section Chief, Collection and Delivery Section, Department of Mail Business and Operations, CHP	Jan 16, 2017

Note: Said officers are all nationals of R.O.C.