



16

I. Organization System

20

**II. Information about Directors, Supervisors, President,
Vice Presidents and Managers**



Organization

I. Organization System

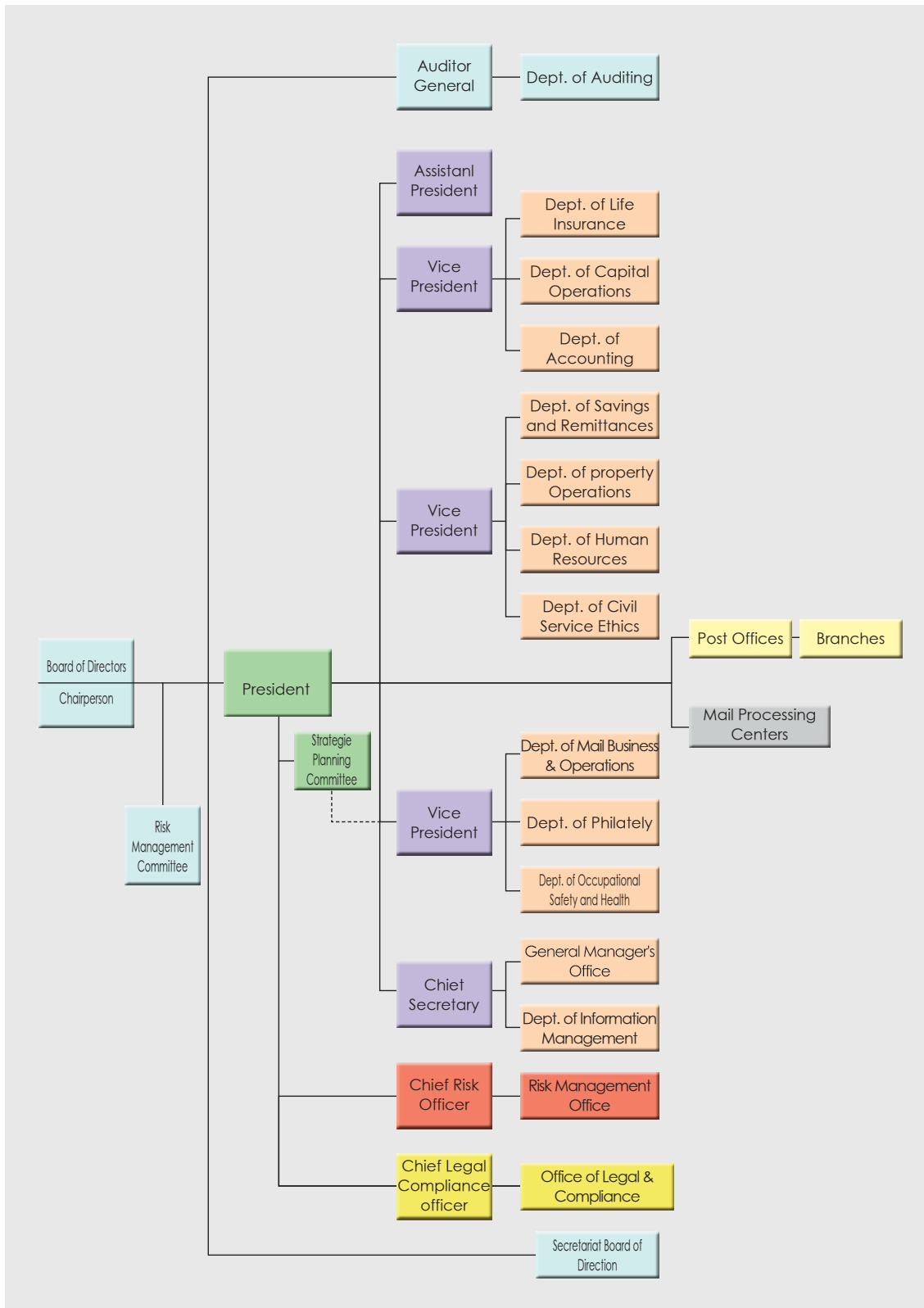
(I) Organization structure

Chunghwa Post Co., Ltd. belongs to the Ministry of Transportation and Communication (MOTC) with an organizational structure including the following:

1. The board of directors. The board is composed of 11 to 15 directors. According to law and the Company's own Articles of Incorporation, this is the Company's decision-making body. In addition, there is a board secretariat responsible for all administrative affairs of the board.
2. Three supervisors. According to law and the Company's own Articles of Incorporation, the supervisors are charged with supervising the Company's financial and business operations.
3. A president. According to law and the Company's own Articles of Incorporation, the president is responsible for carrying out board decisions, overseeing corporate operations, as well as supervising all staff and departments of the Company. The president shall be assisted by one assistant president, four vice presidents and one chief secretary. In addition, there is a president's office and one director of the office. Multiple sections may be assigned in order to meet the business need, if any.
4. A Chief Risk Officer who is responsible for overall risk management operations and a Director for Risk Management Office who may perform duties according to business requirement.
5. A Chief Compliance Officer who is responsible for overall compliance with laws and legal affairs, and a Director for Legal Affairs and Compliance Office who may perform duties according to business requirement.
6. An auditor general (elected by the board of directors) and an auditing department directly under the board. The auditor general and the auditing department are responsible for conducting audits of the Company and making regular reports to the board and corporate supervisors.
7. A Strategic Planning Committee. The committee shall have a chairman, who can also be the Company's president and 5 deputy chairmen, with one chairman working as full-time and several other committee members.
8. The Company owns following departments: the Department of Mail Business and Operations, the Department of Philately, the Department of Savings and Remittances, the Department of Life Insurance, the Department of Property Operations, the Department of Capital Operations, the Department of Human Resources, the Department of Civil Service Ethics, the Department of Accounting, the Department of Information Management and the Department of Occupational Safety and Health.
9. There are 20 responsibility center offices designated as administrative and supervisory post offices, each administering a group of smaller branches.
10. To come to terms with the mail processing requirements, 3 mail processing centers established to integrate mail handling process, mail delivery network and mail routes, using high-performance automatic mail processing systems to process the mail.



(II) Organization Chart





Organization

(III) Establishment and Adjustment of Units:

The current postal organization is divided into administrative and business establishments. Business establishments are in turn divided into self-management establishments and agential establishments. As of the end of 2014, there were 2,544 administrative and business establishments. Among them, 21 were administrative establishments, including the headquarters and 20 responsibility center offices. The business establishments totaled 2,523 which consisted of 1,327 self-management establishments (3 mail processing centers and 1,324 branches) and 1,196 agential establishments (630 post agencies and 566 stamp-sales agencies), a decrease by 2.49% from 65 agencies over the previous year.

Comparative Chart of Postal Establishments

Unit: Office

Type of Postal Establishments		2013	2014	Growth %	
Administrative Establishments	Headquarters	1	1		
	Post Offices	20	20		
	Total	21	21		
Business Establishments	Self-Management Establishments	Mail Processing Centers	3	3	
		Branches	1,322	1,324	+0.15%
		Temporary Post Offices	0	0	
		Total	1,325	1,327	+0.15%
	Agential Establishments	Post Agencies	668	630	-5.69%
		Stamp-Sales Agencies	595	566	-4.87%
		Total	1,263	1,196	-5.30%
Total		2,609	2,544	-2.49%	

(IV) Operations of Major Departments

Department of Auditing:

Performing audits on mail, banking and life insurance operations; and performing audits on the credit analysis of the life insurance business' real estate mortgage loans, etc

Strategic Planning Committee:

Reviewing the Company's major business and investment plans as well as devising the Company's reorganization policies, etc.

General Manager's Office:

Planning, management and appraisal of the Company's business policy and management strategy; reviewing manuscripts; agenda and control of management meeting; recheck on the base price for procurement project; maintaining parliament relations and communicating with elected representatives; compilation and issue of postal service publications.

Legal Affairs and Compliance Office:

Revision of the Company's Articles of Incorporation, organizational chart and organizational guidelines; planning, implementation and assessing of guidelines and rules, division of job duty and job-division system; drafting, revision and abolishment of and review of questions about postal laws and regulations and the Company's management regulations; research, settlement and prosecution of lawsuit and other legal affairs; planning, management, execution and revision of the compliance system.

Department of Mail Business and Operations:

Planning and promoting mail business plans and marketing strategies; setting and adjusting postal rates; establishing, closing and changing the status of postal facilities; planning and managing agential business;



planning and supervising the collection, dispatch, transport and delivery of mail; ensuring the safety of mail operations, etc.

Department of Philately:

Developing, planning, promoting and assessing the philately business; developing, designing, manufacturing and selling stamps and philatelic products, etc.

Department of Savings and Remittances:

Drafting operational policy and goals; planning, supervising, promoting and assessing for remittances business and marketing strategies; dealing with investigations of judicial and tax collection agencies, etc.

Department of Life Insurance:

Drafting and overseeing the development plans and operational goals of the Company's simple life insurance business; as well as planning, supervising and evaluating its real estate mortgage loan business, etc.

Department of Property Operations:

Reviewing, assessing and planning for investment in development project, joint construction project and postal properties utilization; planning & design and supervision of postal properties and management & maintenance of the title thereof; assessment, planning and designing as well as making arrangements for specifications of machinery; planning and implementation of postal business automation system.

Department of Capital Operations:

Managing postal capital; managing foreign exchange and overseas investments; trading and managing derivatives, domestic stocks, beneficiary certificates, and so forth.

Department of Human Resources:

Planning, executing and evaluating human resources; drafting and revising regulations governing personnel; managing affairs regarding staff, including examinations, selection, assignment, appointment, discharge, promotion, relocation, upgrading of rank, retirement, pension and severance, etc.

Department of Civil Service Ethics:

Uncover and fight staff corruption, and handle tips given by whistleblowers. Oversee procurement, protect official confidential information. Prevent sabotage and vandalism, etc.

Department of Accounting:

Analyzing, preparing and auditing the budget and the final account; analyzing, preparing and reporting capital utilization; managing asset accounts and calculating depreciation, amortization and reevaluation; preparing and filing corporate tax and enterprise income tax; development and review of accounting system and accounting process; internal audit; collection, compilation and analysis of statistical data; and announcing financial information.

Department of Information Management:

Researching, analyzing and selecting new IT systems, network, software and hardware equipment; research and implementation of office automated operation; drafting, maintenance and management of information security strategies, and so forth.

Department of Occupational Safety and Health:

Conducting investigations into accidents and occupational injuries; managing staff health issues; handling related paperwork; managing bookkeeping and safekeeping of securities; providing office building security; procuring materials, providing warehousing, receiving orders and suppliers; procuring labor services, etc.

Risk Management Office:

Drafting and implementing policies for risk management; planning, executing and supervising mechanism of risk management; collecting, arranging, analyzing and controlling information of risk management.



Organization

II. Information about Directors, Supervisors, President, Vice Presidents and Managers

(I) Information About Directors and Supervisors

June 30, 2015

Title	Name	Education	Prime Experience(s)	Date Elected
Director	Philip W. Ong	Master in Investment and Financial Risk Management, City University of London	Delegation, Taipei Economic and Cultural Center in India FSC New York Office Director	May 11, 2015
Director	S. J. Chen	Department of Chinese Literature, National Chung Hsing University	Vice President and Chief Secretary of CHUNGHWA POST CO., LTD.	May 11, 2015
Director	C. Y. Yeh	Department of Law, National Chung Hsing University	Vice President and Chief Secretary of CHUNGHWA POST CO., LTD.	May 11, 2015
Director	W. H. Chen	Ph.D in Management Science, State University of New York at Buffalo, USA	Dean, College of Management, NTNU	May 11, 2015
Director	X. J. Lai	Ph.D. in Management Information Systems, Purdue University	Academic Deputy Dean, College of Management, National Sun Yat-sen University	May 11, 2015
Director	Y. S. Liu	Ph.D. in Business Administration, National Sun Yat-sen University	Chair of Department of Business Administration, Tonghai University	May 11, 2015
Director	F. G. Chan	Institute of Economics, NCCU	Special Commissioner, Deputy Director-General and Director-General of Council for Economic Planning And Development	May 11, 2015
Director	J. C. Chung	Institute of Labor Studies, National Chung Cheng University	Director of Employment Services Center and Vocational Training Center Chief of Workforce Development Agency, Ministry of Labor	May 11, 2015
Director	Y. X. Cheng	Department of Statistics, NCCU	Director General, Dept. of Economic Research, Central Bank of the Republic of China (Taiwan)	May 11, 2015
Director	C. C. Rau	Master, Institute of Statistics, National Central University	Special Commissioner, Directorate-General of Budget, Accounting and Statistics, Executive Yuan	May 11, 2015
Director	T. Y. Chuang	Department of Land Economics, NCCU	Chief Secretary and Deputy Director, National Property Administration, Counselor, Ministry of Finance	May 11, 2015
Director	S. C. Su	Master, Graduate Institute of the American Studies, Tamkang University	Special Commissioner of Department of Customs Administration, Ministry of Finance, and Senior Auditor of Customs Administration, Ministry of Finance	May 11, 2015
Director	C. C. Lin	Dept. of International Trade, Open Business College Affiliated with National Taipei College of Business	Chairman of Chinese Postal Workers' Union (CPWU), Taipei Branch of the 1st and 2nd term Supervisor, Corporate Body of Taiwan Postal Association of the 3rd term	May 11, 2015
Director	W. F. Wu	Department of Business Administration, Tatung College of Business	Director and Vice Chairman of CPWU Chairman, Headquarters Branch, CPWU	May 11, 2015
Director	C. S. Chen	Private Tung Hai Vocational Senior High School	Chairman, Sanchung Branch, CPWU Vice Chairman of CPWU	May 11, 2015
Supervisor	C. C. Wu	Department of Land Economics, NCCU	Counselor, Executive Yuan	May 11, 2015
Supervisor	H. L. Chen	Department of Cooperative Economics, Feng Chia University	Director of Office of Accounting, Tourism Bureau, and Director of Office of Accounting, Directorate General of Highways, MOTC	May 11, 2015
Supervisor	J. S. Huang	Master in Statistics, NCCU	Statistician General, Veterans Affairs Council, Ministry of Education, and Department of Statistics, Ministry of Economic Affairs	May 11, 2015

Note: Said officers are all nationals of the R.O.C..



(II) Principle Corporate Shareholders

Name of Corporate Shareholder	Principle Corporate Shareholders
Ministry of Transportation and Communication	This provision does not apply since Chunghwa Post Co., Ltd. is a 100% state-owned enterprise.

(III) Information about President, Vice Presidents, Directors and Managers

July 15, 2015

Job Title	Name	Education	Prime Experience(s)	Date Elected
President	S. J. Chen	National Chung Hsing University Department of Chinese Literature,	Vice President, Chunghwa Post Co., Ltd.	May 11, 2015
Assistant President	C. Y. Yeh	Department of Law, National Chung Hsing University	Vice President, Chunghwa Post Co., Ltd.	July 16, 2014
Vice President	Y. J. Wu	Tatung Institute of Technology Master in Business Administration	Director, Capital Operations Dept., CHP	June 27, 2012
Vice President	J. T. Chiang	Department of Law, National Taiwan University	Chief Secretary, CHP	July 16, 2014
Vice President	J. C. Chou	Department of Journalism, Chinese Culture University	Manager, Panchiao Post Office	July 16, 2014
Auditor General	G. T. Yang	Department of Political Science, Tunghai University	Chief Secretary, CHP	January 16, 2015
Chief Secretary	S. M. Wang	Master of Computer Science, Asian Institute of Technology, Thailand	Director, Department of Information Management, CHP	January 16, 2015
Director, Department of Mail Business and Operations	G. X. Li	Tamkang University Chemical Engineering Department	CHP Special Commissioner and concurrently served as Deputy Director, Department of Mail Business & Operations	August 31, 2012
Director, Department of Philately	L. L. Jian	Tamkang University Master of International Business	Manager, Keelung Post Office	July 16, 2014
Director, Department of Savings and Remittances, CHP	H. C. Huang	Department of Public Finance, National Chung Hsing University	Assistant Manager, Panchiao Post Office	January 16, 2015
Director, Department of Life Insurance	C. Y. Guo	Soochow University Master in Law	Member of Strategic Planning Committee, CHP	July 18, 2014
Director, Department of Property Operations	W. Q. Tsai	National Taiwan University Master in Mechanical Engineering	Supervising Engineer, Department of Property Operations, CHP	January 16, 2014
Director, Department of Capital Operations	Y. K. Pan	National Taiwan University Master in Finance	Deputy Director, Department of Capital Operation, CHP	August 8, 2012



Organization

Job Title	Name	Education	Prime Experience(s)	Date Elected
Director, Department of Human Resources	J. H. Qiu	NCCU Department of Law	Deputy Director, Department of Human Resources, CHP	July 16, 2014
Director, Department of Civil Service Ethics	L. S. Yang	Taipei Medical University Department of Pharmacy	Deputy Director, Department of Civil Service Ethics, CHP	January 16, 2015
Director, Department of Accounting	J. R. Wang	Providence University Department of Business	Deputy Director, Department of Accounting, CHP	July 16, 2014
Director, Department of Information Management	S. D. Chen	Fujen Catholic University Department of Library	Deputy Director, Department of Information Management	January 16, 2013
Director, Department of Occupational Safety and Health	D. Y. You	National Chung Hsing University Department of Law	Lead Auditor of Chiayi Audit Section, Department of Audit, CHP	January 16, 2015
Chief Risk Officer	P. H. Huang	Department of Accounting, National Chung Hsing University	Lead Auditor, Department of Audit, CHP	July 6, 2015
Chief Compliance Officer	Q. Y. Chiang	The National Open University Department of Sociology	Director, Department of Occupational Safety and Health, CHP	January 16, 2015
Manager, Taipei Post Office	C. Y. Yeh (part-time)	Department of Law, National Chung Hsing University	Assistant President, Chunghwa Post Co., Ltd.	July 16, 2014
Manager, Panchiao Post Office	Susan Lan	Department of Political Science, National Taiwan University	Director, Department of Philately	July 16, 2014
Manager, Taoyuan Post Office	C. H. Ku	Dept. of International Trade, Open Business College Affiliated with National Taipei College of Business	Manager, Chungli Post Office	March 1, 2013
Manager, Taichung Post Office	C. J. He	The National Open University Department of Public Administration	Assistant Manager, Taichung Post Office	January 16, 2014
Manager, Kaohsiung Post Office	(Not yet authorized but assumed by Assistant Manager T. C. Kuo of the Post preliminarily)			July 15, 2015
Manager, Keelung Post Office	Z. H. Xu	National Chung Hsing University Master of Public Administration	Manager, Miaoli Post Office	July 16, 2014
Manager, Sanchung Post Office	Z. A. Liao	Master in Accounting, NCCU	Manager, Hsinchu Post Office	July 15, 2015
Manager, Hsinchu Post Office	Q. X. Jiang	Department of Law, Soochow University	Lead Auditor, Department of Audit, CHP	July 15, 2015
Manager, Changhua Post Office	Y. H. Wang	Department of Business Administration, Tunghai University	Manager, Chiayi Post Office	January 9, 2015



Job Title	Name	Education	Prime Experience(s)	Date Elected
Manager, Chiayi Post Office	Q. H. Su	National Sun Yat-sen University Master in Business Administration	Assistant Manager, Kaohsiung Post Office	January 9, 2015
Manager, Tainan Post Office	J. Y. Tseng	Department of Economics, Fujen Catholic University	Assistant Manager, Kaohsiung Post Office	January 16, 2013
Manager, Yilan Post Office	S. F. Yang	Ming Chuan University Master in Management Science	Deputy Auditor of Panchiao Audit Section, Department of Audit, CHP (1)	January 16, 2014
Manager, Miaoli Post Office	L. H. Peng	Soochow University Department of International Trade	Section Chief, Department of Occupational Safety and Health, CHP	July 16, 2014
Manager, Nantou Post Office	X. C. Chen	Department of Law, Fujen Catholic University	Section Chief, Labor Safety (General Affairs) Section, Taichung Post Office	January 9, 2014
Manager, Yunlin Post Office	T. B. Shi	National Chung Cheng University Master in Accounting Information	Assistant Manager, Changhua Post Office	January 16, 2013
Manager, Xinying Post Office Station	L. J. Huang	National Cheng Kung University Department of Business Administration	Taichung Post Office Section Chief, Business Management Section	July 11, 2013
Manager, Pingtung Post Office	H. L. Wu	Dayeh University Master in Business Management	Penghu Post Office Manager	January 16, 2014
Manager, Hualien Post Office	J. D. Jiang	Department of Business, The National Open University	Section Chief, Business Development Section, Department of Mail Business and Operations, CHP	January 16, 2014
Manager, Taitung Post Office	R. H. Li	Province Kaohsiung Institute of Technology Department of Mechanical Engineering	Section Chief, Postal Affairs Section, Kaohsiung Post Office	July 16, 2014
Manager, Penghu Post Office	K. Y. Tsai	Fujen Catholic University Department of Business Administration	Section Chief, Labor Safety (General Affairs) Section, Kaohsiung Post Office	January 16, 2014
Director, Taipei Mail Processing Center	R. Q. Yang	National Chiao Tung University Master in Management Science	Deputy Director of Taipei Mail Processing Center	January 16, 2013
Director, Taichung Mail Processing Center	J. S. Wu	The National Open University Department of Social Science	Manager, Miaoli Post Office	November 7, 2012
Director, Kaohsiung Mail Processing Center	L. S. Du	Open Junior College of Commerce, National Cheng Kung University	Manager, Xinyin Post Office	July 11, 2013

Note: Said officers are all nationals of the R.O.C..